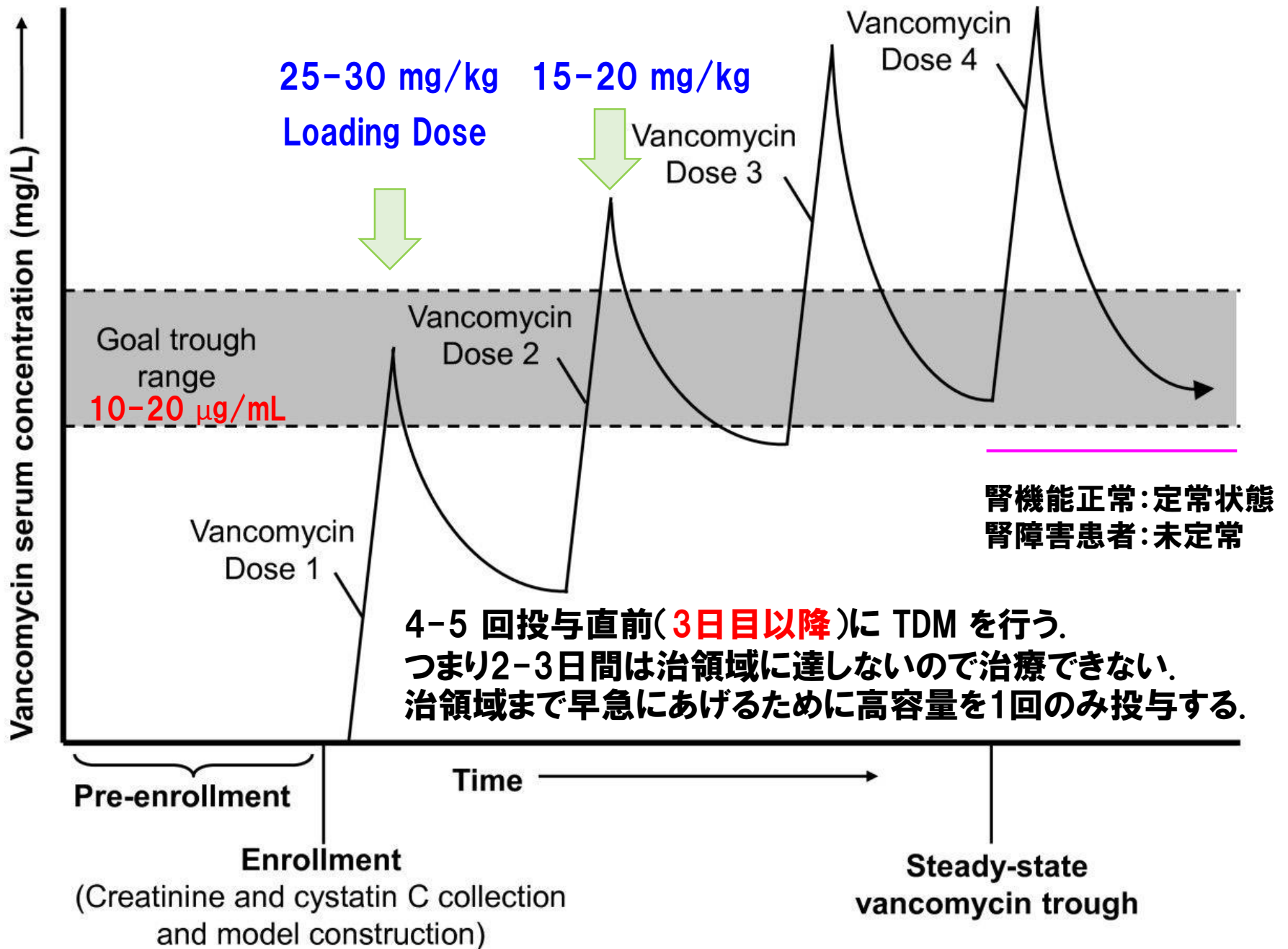


**MRSAといえは
とりあえずVCM**

VCM:すぐに治療濃度に達しない

Loading Dose
負荷投与(高投与量)



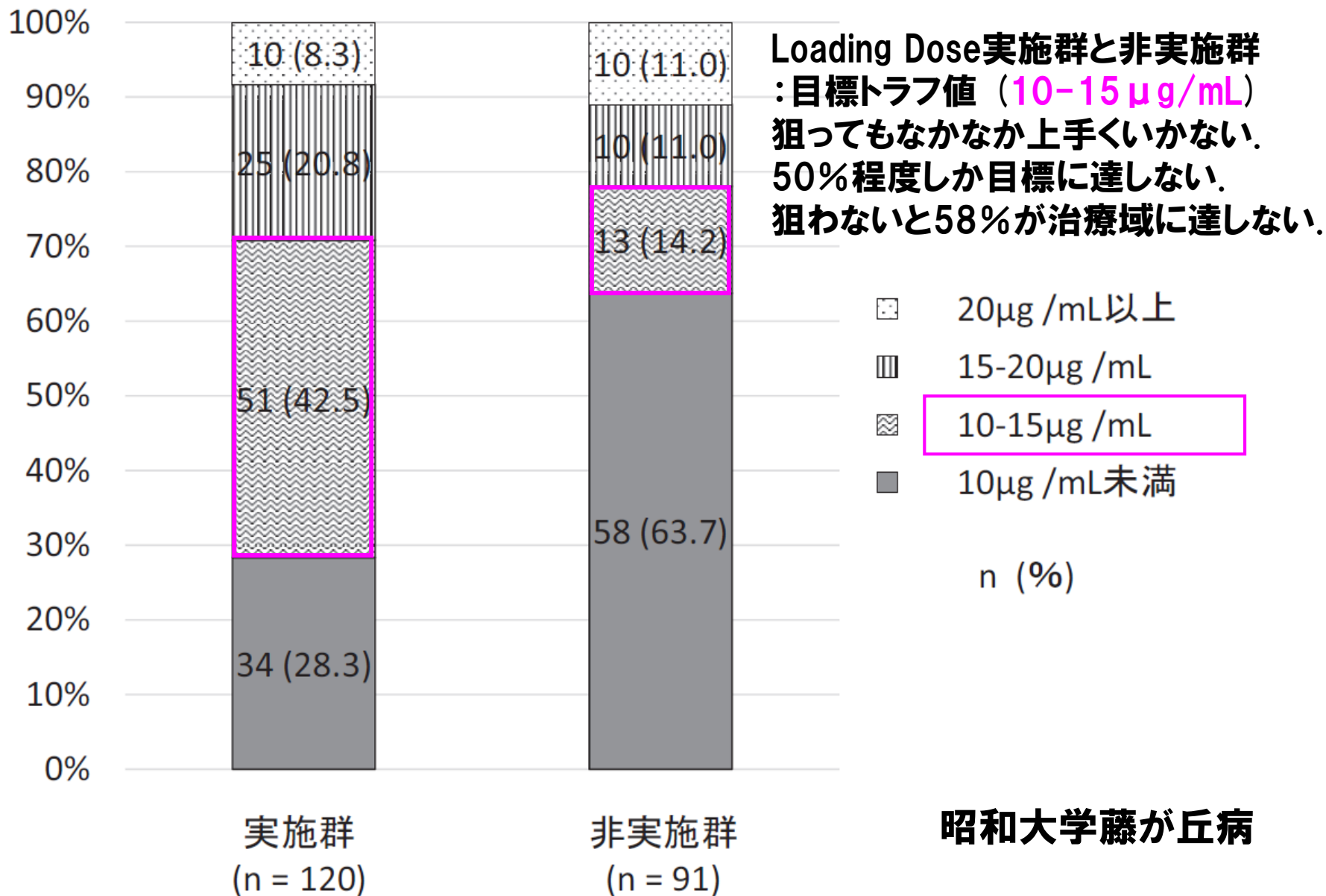


図2 初期投与設計実施群, 非実施群のVCMトラフ到達度

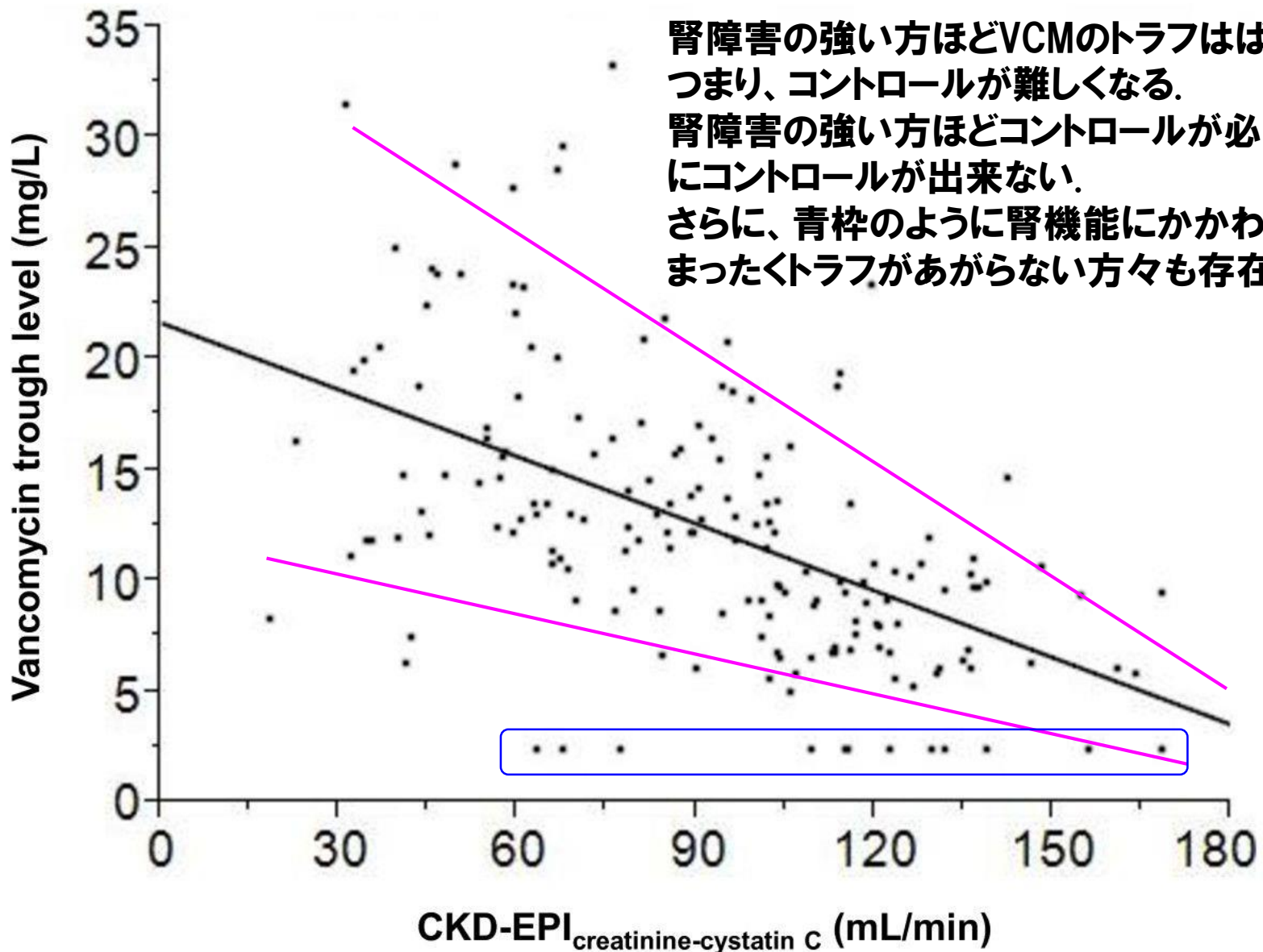


Figure 4 Association between vancomycin trough concentrations and estimated glomerular filtration rate (GFR) with CKD-EPI_{creatinine-cystatin C}. A significant inverse relationship exists between GFR and vancomycin troughs ($P < 0.0001$). Patients with a GFR of more than 120 mL/min rarely reached the minimum acceptable trough of 10 mg/L. CKD-EPI, Chronic Kidney Disease Epidemiology Collaborative.

Survival of vancomycin versus non-vancomycin treatment groups at 30 days in the overall sample.

30-Day survival

Infect Drug Resist. 2018; 11: 1073-1081.

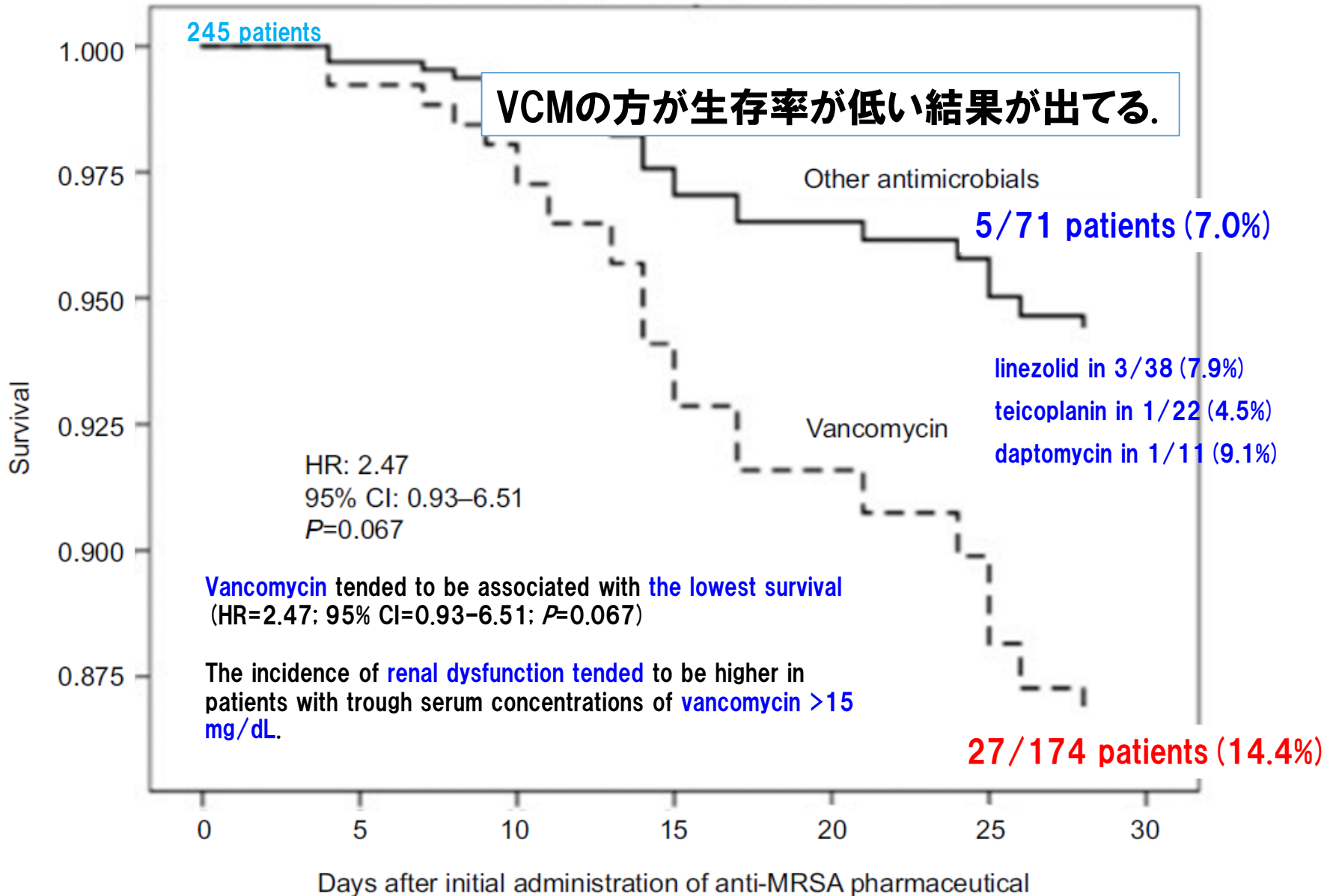
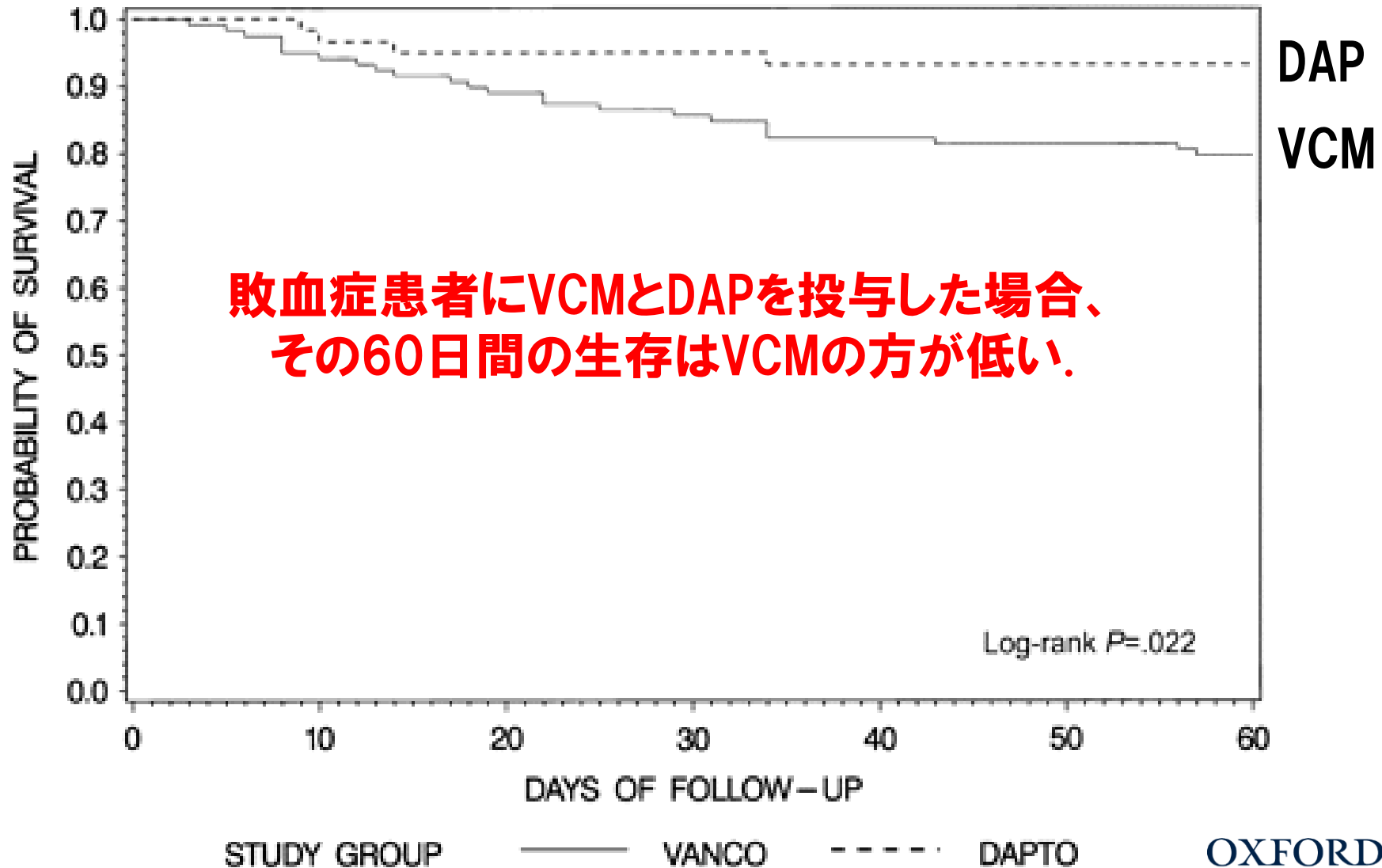


Figure 1. Kaplan–Meier estimates of the probability of 60-d mortality, shown here as the probability of survival at 60 d between vancomycin-treated subjects (vanco) and daptomycin-treated subjects (dapto) with methicillin-resistant Staphylococcus aureus bloodstream infection with a higher vancomycin minimum inhibitory concentration. $>1 \mu\text{g/mL}$



**このようなデータが沢山ありますが、
とりあえずVCMでいいですか？**